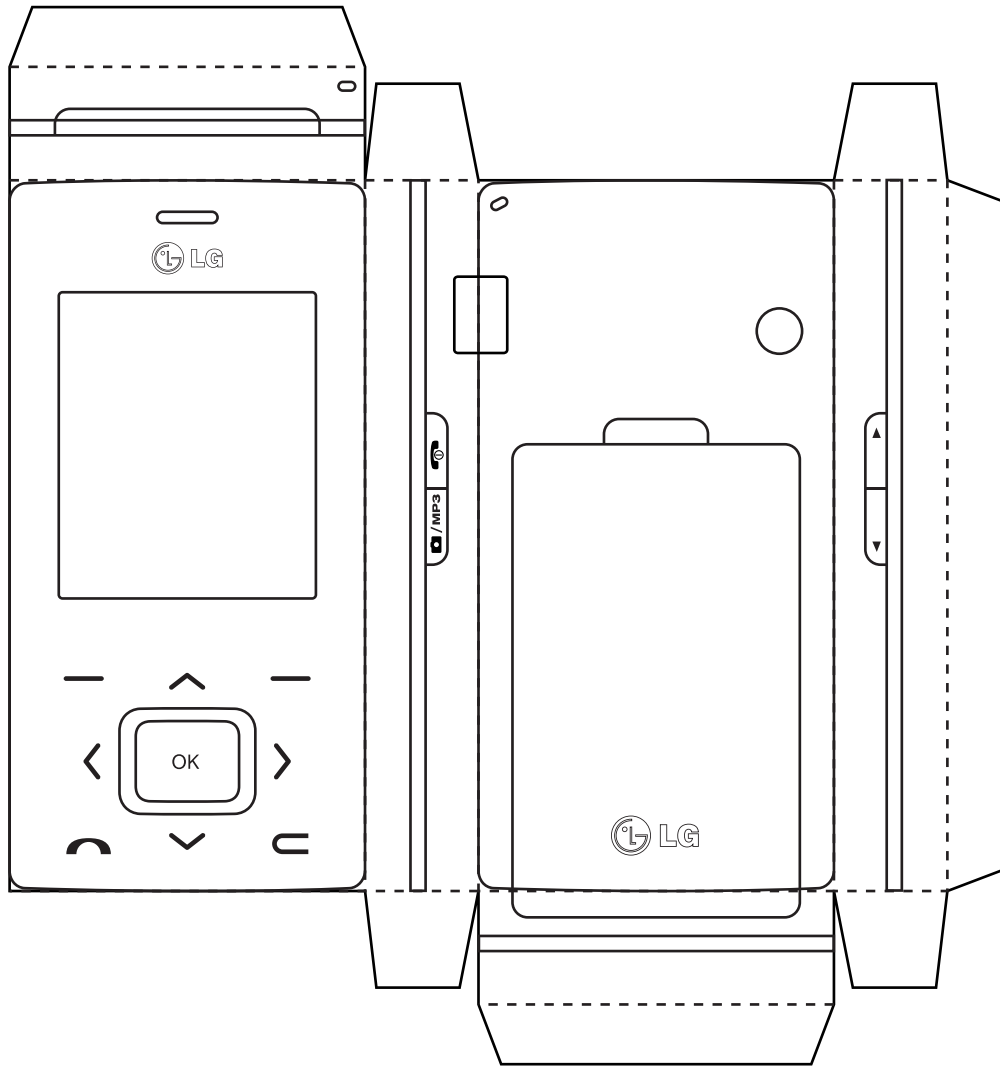


LG KG800 Chocolate



Warning:

This phone is not real. It will never be able to make calls, no matter how carefully you cut it out. If you do try to make calls with it, you're bound for huge disappointment. Under no circumstances put your SIM in this phone, because it'll probably fall out and you'll lose it. Don't plug it into your charger. Don't do anything phone-related with it, except for modding it up.